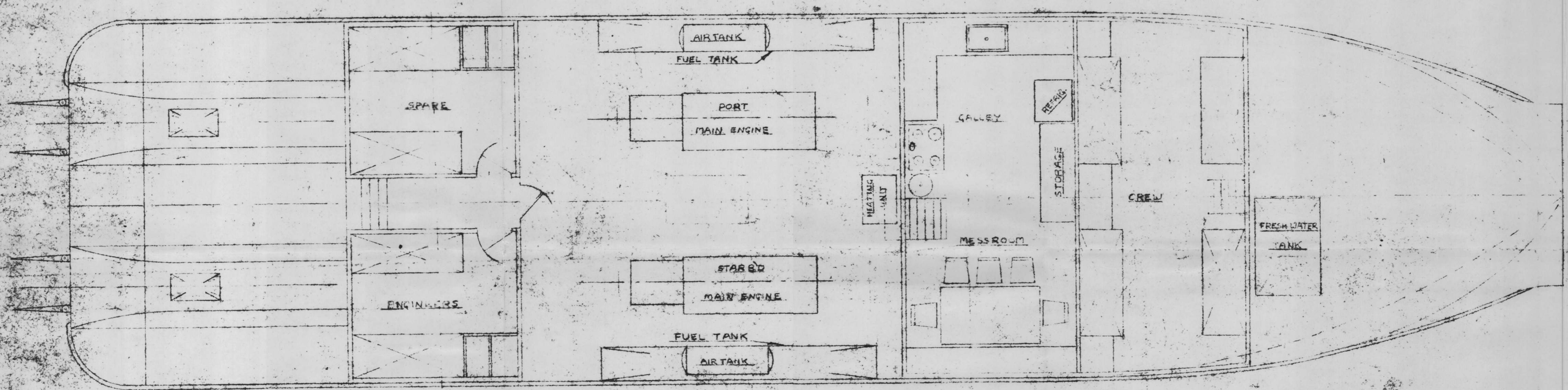
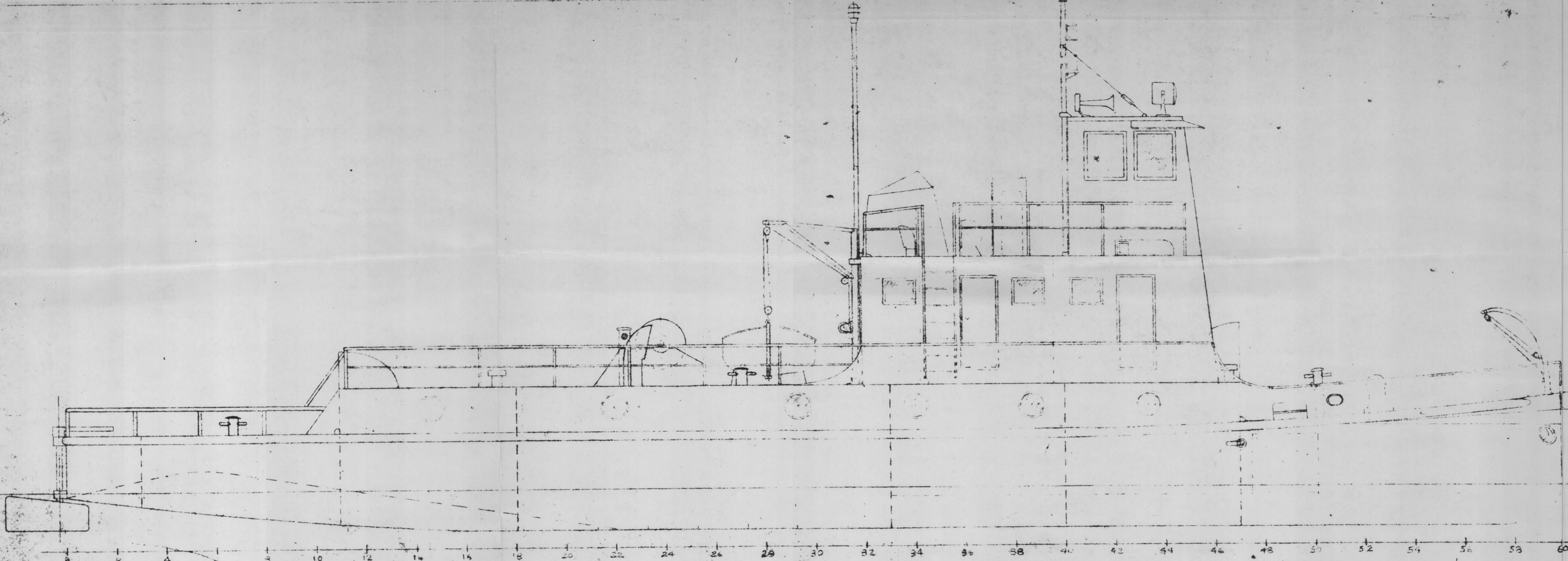


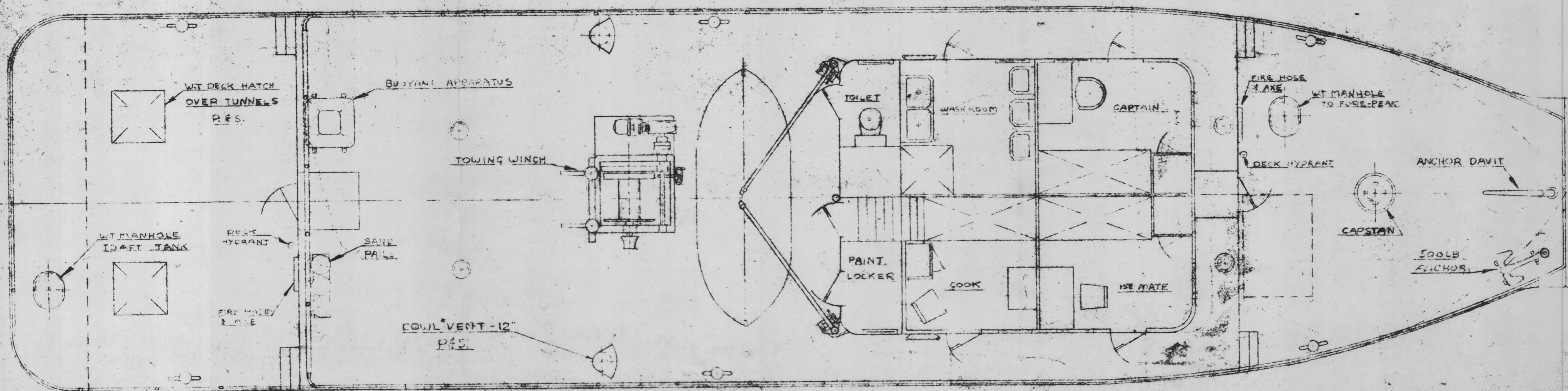
STEEL CRAFT TWIN SCREW DIESEL TUG

PRINCIPAL DIMENSIONS

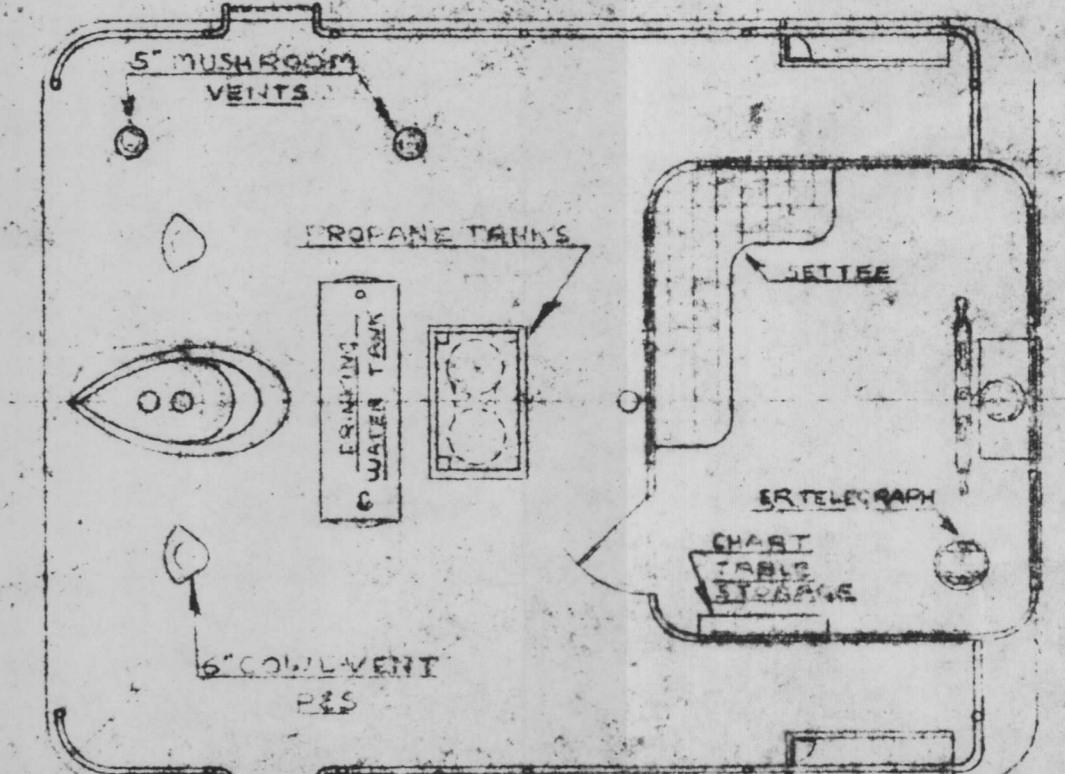
LENGTH OVERALL: 80'-0"  
 BEAM MOULDED: 21'-0"  
 DEPTH MOULDED: 5'-0"  
 DRAFT DESIGNED: 2'-0"



PLAN BELOW DECK



PLAN OF DECK



PLAN OF WHEELHOUSE

GUNNAR TRANSPORTS LTD.	
DISEL-HIPWELL ENGINE - LT.	
TWIN SCREW ON AND	
PORT TWIN SCREW 175	
NO. 2470	541
DATE MAR 27 1935	CHECKED

M