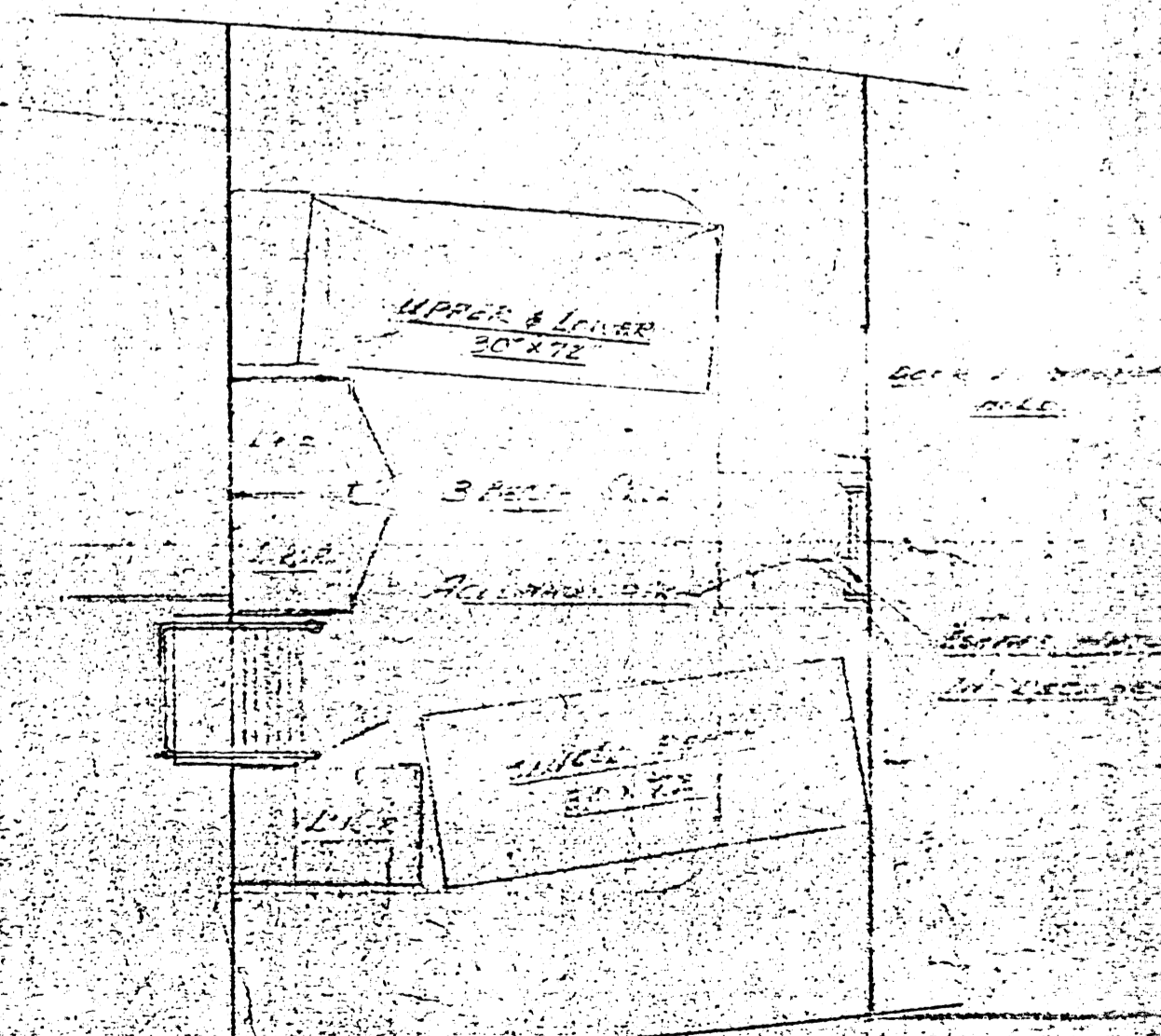
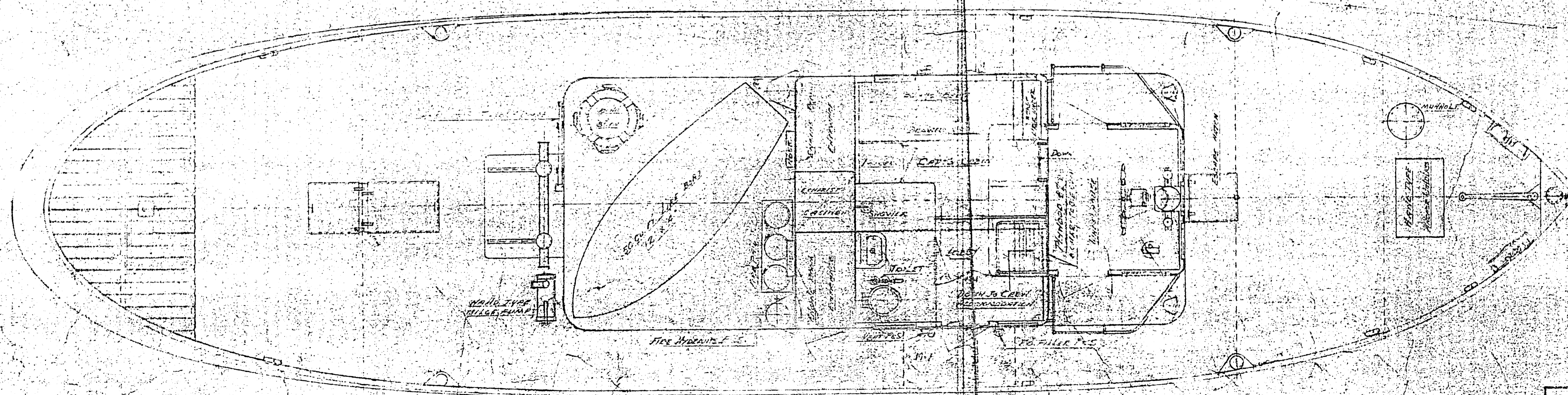
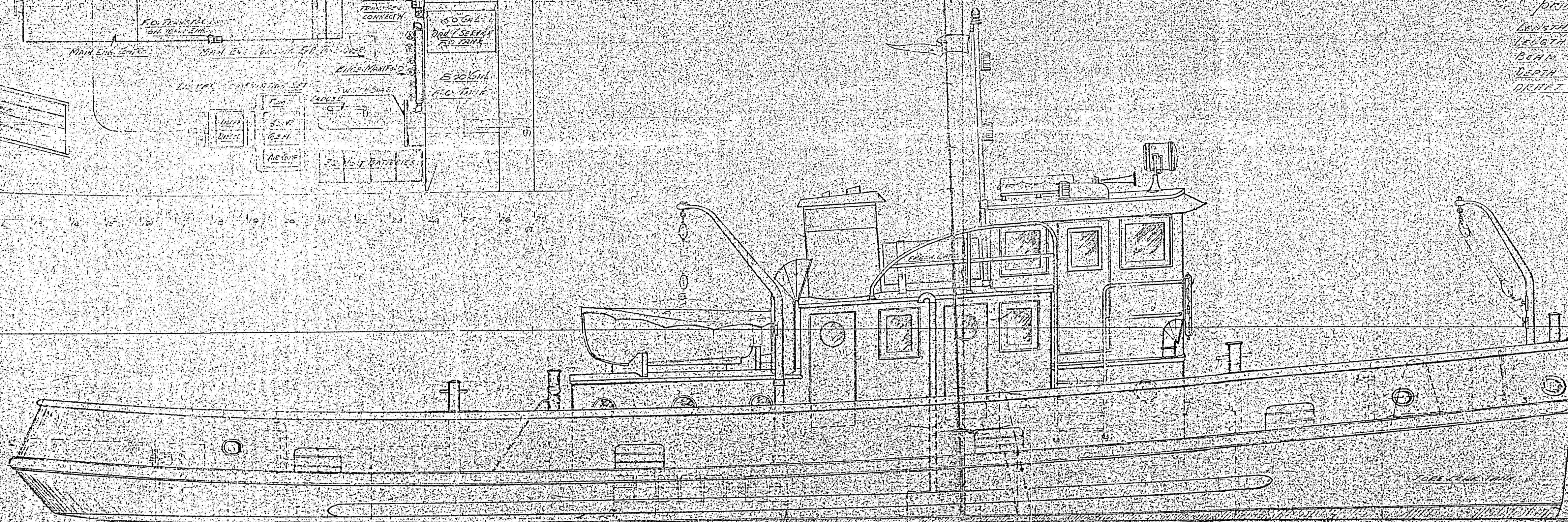


# 65' STEELCRAFT DIESEL POWERED TUG

## Principal dimensions

LENGTH O/A	65'-0"
LENGTH S/P	59'-6"
BEAM MOULDED	16'-0"
DEPTH DECK TO L	7'-0"
DRIFT NET	5'-3"



DATE	REVISIONS	PLANS & PROFILES
MAY 18 1948	Eng. Room Fuel Tanks, Lower Vault, Coffin Case, Deck Accommodation, Entrance to Deck, Core Structure over Steering Gear, Ford Motor and Generator, Main Mast	65' Diesel Powered Tug
		RUSSEL BROTHERS
		OWEN SOUND, ONTARIO