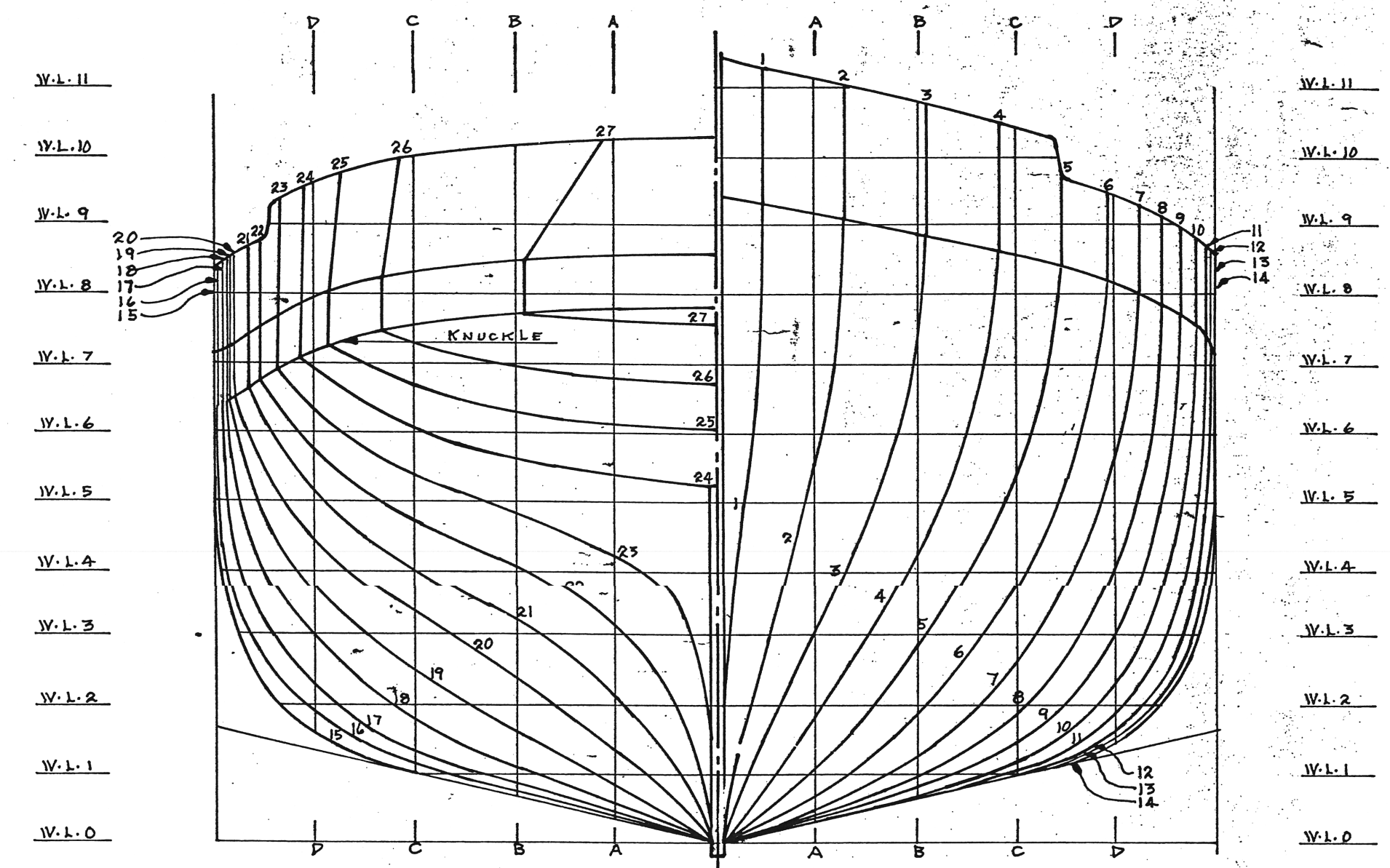


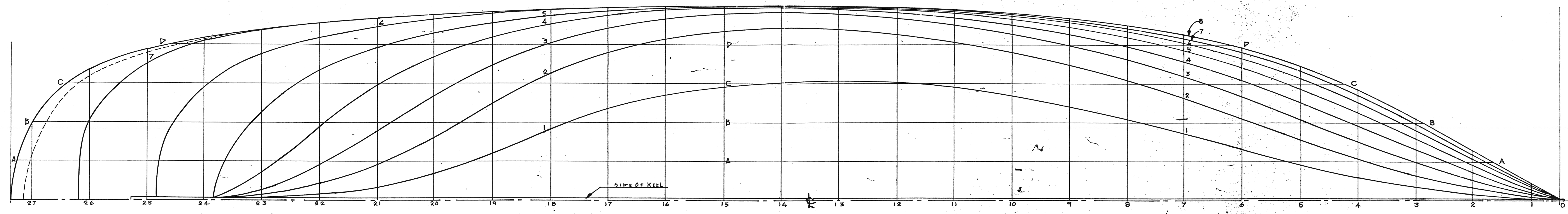
SHEER PLAN

BODY PLAN



NOTES

<p>SPECIFICATIONS</p> <p>L.O.A. - 80'-10" BEAM MAX. - 20'-2" DRAFT - 8'-0" DISPLACEMENT - 150 TONS (20000^{cu}) SPEED - 11 1/2 KNOTS MACHINERY - ONE 6 CYLINDER CYCLO ENTERPRISE DIESEL ENGINE OF 200 H.P. CREW - 12 OFFICERS & MEN.</p>	<p>FRAMING RULES</p> <p>BUILDERS CONSTRUCTING PLANK ON FRAME HULLS ARE REMINDED THAT FORWARD OF AMIDSHIPS, ALL FRAMES SHOULD BE LOCATED WITH THEIR AFTER FACES ON THE STATION LINES; AFT OF AMIDSHIPS, ALL FRAMES SHOULD BE LOCATED WITH THEIR FORWARD FACES ON THE STATION LINES. FAILURE TO OBSERVE THIS RULE WILL RESULT IN AN UNFAIR HULL.</p>
<p>LAMINATED HULLS</p> <p>FOR THE CONVENIENCE OF CONSTRUCTORS BUILDING "BREAD & BUTTER" LAMINATED HULLS, THE WATER LINES HAVE BEEN SPACED AT 1/16" TO ALLOW FINISH PRICKING DOWN FROM</p>	<p>COLOUR SCHEME</p> <p>HULL BELOW WATERLINE - TERRACOTTA - HUMBROL #70. HULL ABOVE WATERLINE - DARK BLUE-GRAY - HUMBROL #27. UPPER DECK - TERRACOTTA - HUMBROL #70. DECK & WHEELHOUSE SIDES - LIGHT GRAY - HUMBROL #63. WHEELHOUSE ROOF - DARK GRAY - HUMBROL #65. WHEELHOUSE DECK FASCIA - DARK BLUE-GRAY - HUMBROL #27. FUNNEL TOP DOWN TO FUNNEL BAND - BLACK. RITA & BOLLARDS - DARK BLUE-GRAY - HUMBROL #27. FUNNEL MAPLE LEAF INCIANIA-MEDIUM GREEN - HUMBROL #2.</p>



HALF BREADTH PLAN

A DOUGLAS B. MUNRO PLAN

COPYRIGHT © 1991. ALL RIGHTS RESERVED BY P. B. MUNRO-63 AVENUE AVE, OTTAWA, ONT, CANADA

SERIES 3 A MODEL OF THE CANADIAN NAVAL HARBOUR TUG

3 H.M.C.T. "GLENSIDE"

AS THE SHIP APPEARED IN APRIL, 1945.

WORLDWIDE SCALE: 1/2" = 1'-0" 1:24 SHEET NO.

DESIGN NO. LINES DRAWING & NOTES.

910901 DRAWN BY DOUGLAS B. MUNRO **3**

DATE: SEPTEMBER 15, 1991. OF THREE